

Material:

Housing: 30% Glass filled PBT UL94V-0

Contacts: Brass or Phosphor Bronze

Plating: Selective gold plated: gold plated on

Mating area and nickel plated on wire cutting area

Gold plated: 2u" over 50u" nickel

Tin plated: 100u" over 50u" nickel

Cable: 1.27mm (0.050") pitch flat cable

Electrical Characteristics:

Current Rating: 1 AMP

Insulator Resistance: 5000MΩmin. at DC 500V

Contact Resistance: 20mΩmax. at DC 100mA

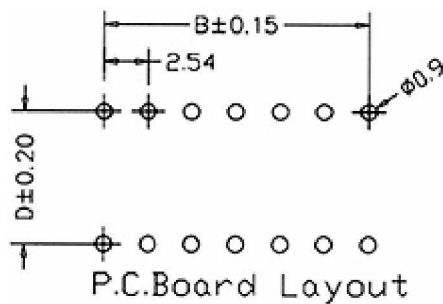
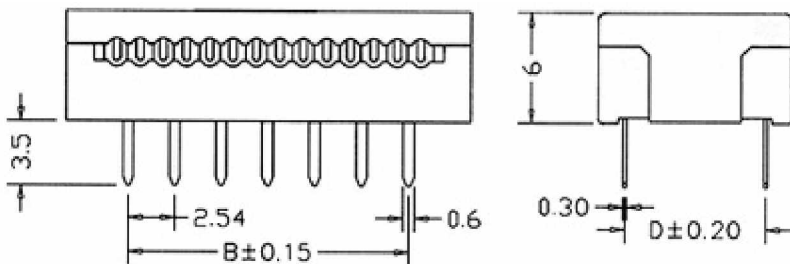
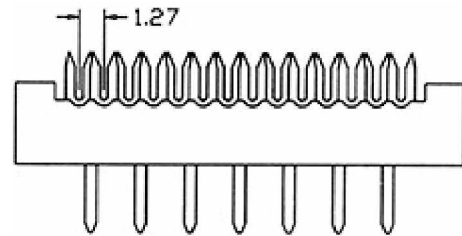
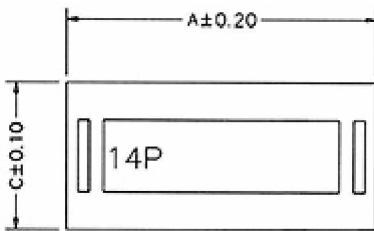
Operating Temperature: -55 ~+105

Features:

* Recommended 28AWG 1.27mm(0.05")flat cable.

*Plug directly into PCB.

Yueqing shi kaifa electronic co.,ltd
 Tel: 0086-13634204680
<http://www.china-electrical-supplier.com>
 master@china-electrical-supplier.com



Position	Dimension			
	A	B	B	B
14	22.00	15.24	10.60	7.62
16	24.54	17.78	10.60	7.62
18	27.08	20.32	10.60	7.62
20	29.62	22.86	10.60	7.62
24	34.70	27.94	18.20	15.24
28	39.78	33.02	18.20	15.24
32	44.86	38.10	18.20	15.24
40	54.98	48.26	18.20	15.24

Ordering information

ZP 113-

Series No.of 0:Selective Gold plated 0:Black
 Pin Count 1:Tin plated 1:Grey
 2:Gold plated