



#### Material:

Housing: 30% Glass filled PBT UL94V-0

Contacts: Brass

Plating: Selective gold plated: gold plated on mating area and nickel plated on wire cutting area

Gold plated: 2u" over 50u" nickel

Tin plated: 100u" over 50u" nickel

#### Electrical Characteristics:

Current Rating: 1 AMP

Insulator Resistance: 5000MΩmin. at DC 500V

Contact Resistance: 20mΩmax. at DC 100mA

Operating Temperature: -55 ~+105

#### Features:

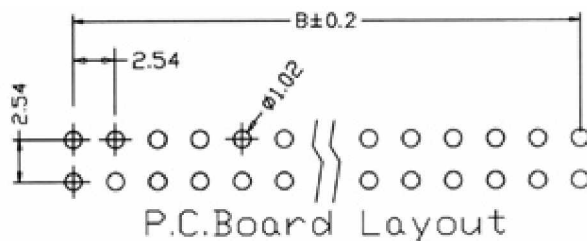
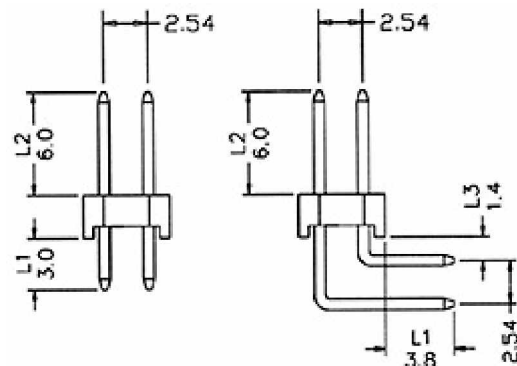
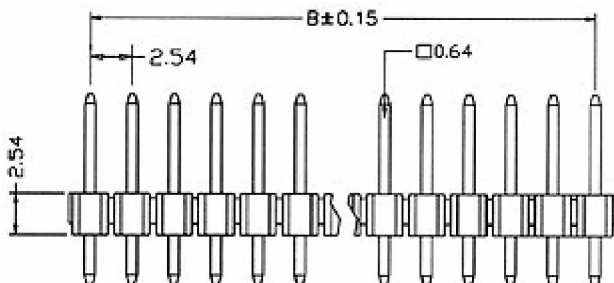
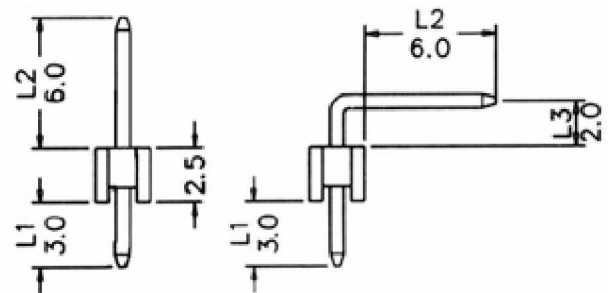
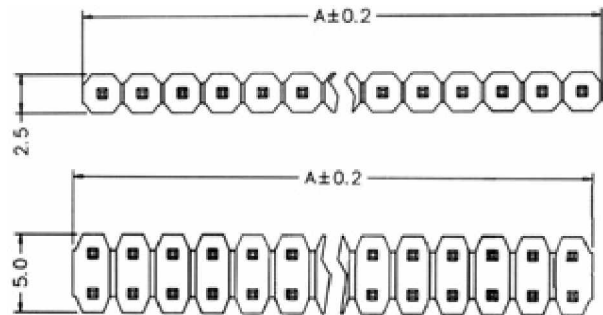
- \* Available in straight and right angle.
- \* Side-to-side and end-to-end stackable.
- \* Custom design offered..

Yueqing shi kaifa electronic co.,ltd

Tel: 0086-13634204680

<http://www.china-electrical-supplier.com>

master@china-electrical-supplier.com



Position	1 Thru 40
Dimension	2 Thru 80
A	2.54xNo.of Positions
B	2.54xNo.of Positions-2.54

#### Ordering information

**ZP 114-** ☐ ☐ ☐ ☐ ☐  
 Series No.of 0:Selective Gold plated 0:Straight 0:Black  
 Pin Count 1:Tin plated 1:Right Angle 1:Grey

\*L1:Dip Length L2:Mating Length L3:Extended Length