



Material:

Housing: 30% Glass filled PBT UL94V-0
 Contacts: Phosphor Bronze or Brass
 Plating: Gold plated: 2u" over 50u" nickel
 Tin plated: 100u" over 50u" nickel

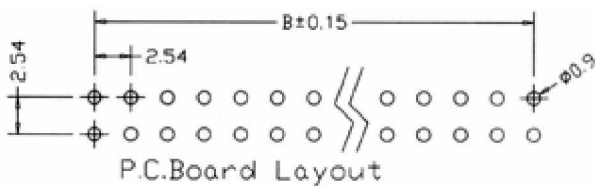
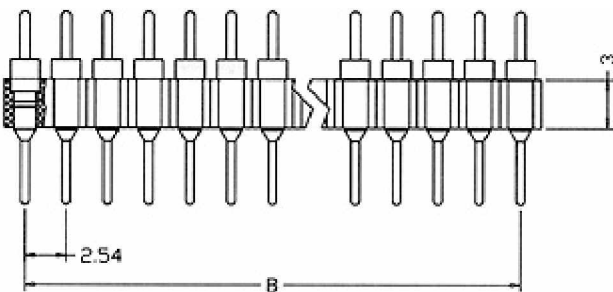
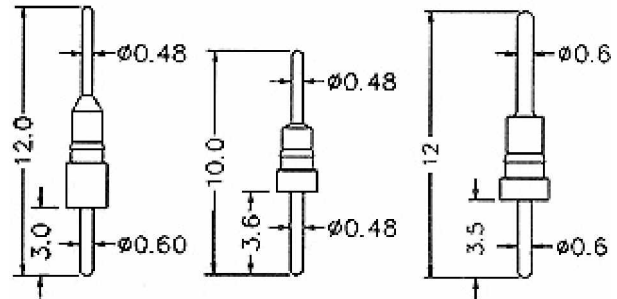
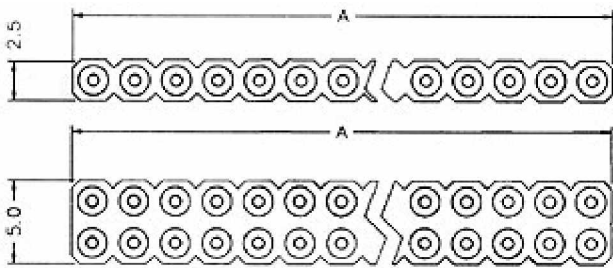
Electrical Characteristics:

Current Rating: 1 AMP
 Insulator Resistance: 5000MΩmin. at DC 500V
 Contact Resistance: 20mΩmax. at DC 100mA
 Operating Temperature: -55 ~+105

Features:

- * Available in both straight and right angle.
- * Side-to-side and end-to-end stackable.
- * Straight, Eight angle and Wire Wrap.

Yueqing shi kaifa electronic co.,ltd
 Tel: 0086-13634204680
<http://www.china-electrical-supplier.com>
master@china-electrical-supplier.com



Position	2 Thru 80
Dimension	
A±0.20	2.54xNo.of Positions+0.5
B±0.15	2.54xNo.of Positions-2.54

Ordering information

ZP 123 -	<input type="checkbox"/>	<input type="checkbox"/>	<input type="checkbox"/>	<input type="checkbox"/>	<input type="checkbox"/>
Series	No.of	0:Gold plated	0:Brass	0:12.00mm	
	Pin Count	1: Tin plated	1: Phosphor Bronze	1: 10.00mm	